

For more information, click here

<http://www.greatifealumni.org/2008reunion>



2008 GREAT IFE ALUMNI REUNION

AUGUST 28 TO SEPTEMBER 1, 2008

Marriott Hotel, Walnut Creek

San Francisco Bay Area, California, United States

Theme: *Breaking into the Top 200 World Universities*

THE TOURS

THIS BULLETIN IS DEVOTED TO A DESCRIPTION OF THE FOUR SCHEDULED TOURS FOR ALUMNI AND THEIR GUESTS. THE TOURS ARE AS FOLLOWS:

1. NAPA AND SONOMA VALLEYS



HAVE YOU EVER WONDERED HOW WINE IS MADE? FULFILL YOUR CURIOSITY BY JOINING US ON A TRIP THROUGH THE NAPA AND SONOMA VALLEYS.

THE NAPA VALLEY PRODUCES THE LARGEST QUANTITY OF WINE IN THE UNITED STATES. IT HAS ABOUT 340 WINERIES SPREAD OVER 43,000 ACRES OF PLANTED VINEYARDS. ALMOST 5 MILLION TOURISTS VISIT THE NAPA VALLEY ANNUALLY. LEARN WHY THE CLIMATE, GEOGRAPHY, AND GEOLOGY OF THE NAPA VALLEY IS IDEAL FOR GROWING THE BEST GRAPES.

UNDERSTAND THE WINE MAKING PROCESS, PARTICIPATE IN WINE TASTING, RIDE ON POPULAR TOURIST TRAMS, AND PURCHASE CUSTOM LABELLED BOTTLES OF YOUR FAVORITE WINES!



WITH OVER 240 WINERIES ON 60,000 ACRES OF PLANTED VINEYARDS, THE SONOMA VALLEY ACTUALLY HAS MORE GRAPE VARIETIES. EXPLORE THIS SERENE WINE RETREAT, AND APPRECIATE THE FINE ART OF WINE MAKING.



DISCOVER DIFFERENT TYPES OF GRAPES GROWN AT THESE WINERIES INCLUDING CABERNET SAUVIGNON, MERLOT, CABERNET FRANC, PINOT NOIR, ZINFANDEL, CHARDONNAY, SAUVIGNON BLANC, AND MANY OTHERS.

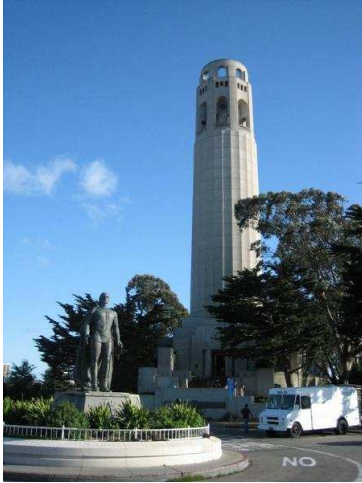
2. CITY OF SAN FRANCISCO TOUR



IN 2006, SAN FRANCISCO HOSTED 15.8 MILLION VISITORS!

CONSISTENTLY RANKED AS ONE OF THE TOP TOURIST DESTINATIONS IN THE WORLD, IT GENERATES APPROXIMATELY \$8 BILLION IN ANNUAL REVENUE FROM TOURISM.

THE GUIDED TOUR OF 'THE CITY' AS IT IS POPULARLY REFERRED TO IN THE BAY AREA WILL PASS THROUGH ALL THE HOTSPOTS SUCH AS THE VICTORIANS, CIVIC CENTER, UNION SQUARE, NOB HILL, AND CHINATOWN.



PART OF THE TOUR WILL ALSO INCLUDE VIEWS OF TWIN PEAKS, NORTH BEACH, **COIT TOWER**, THE MARINA DISTRICT, PALACE OF FINE ARTS AND EXPLORATORIUM, THE PRESIDIO, GOLDEN GATE PARK, AND FISHERMAN'S WHARF.

THE MOTORCOACH TOUR WILL INCLUDE STOPS AT THE TOP OF TWIN PEAKS AND AT A PICTURESQUE VIEWING POINT OF THE GOLDEN GATE BRIDGE.

3. SAN FRANCISCO BAY CRUISE AND AQUARIUM OF THE BAY VISIT



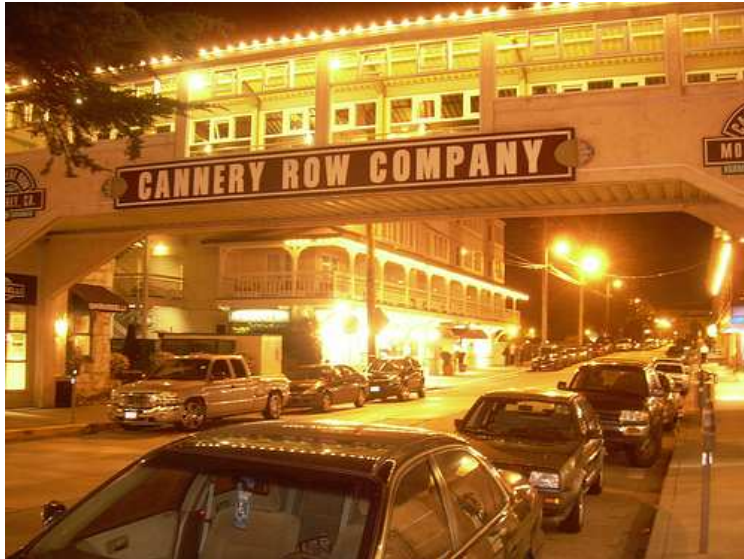
THE SAN FRANCISCO BAY CRUISE WILL SAIL ALONG THE CITY OF SAN FRANCISCO'S HISTORIC WATERFRONT, PAST **THE SEA LIONS** CLUSTERED AROUND PIER 39 AT FISHERMAN'S WHARF.

THE CRUISE WILL PASS UNDER THE GOLDEN GATE BRIDGE, GO BY THE SLEEPY SEASIDE COMMUNITY OF SAUSALITO, PAST ANGEL ISLAND, AND AROUND ALCATRAZ ISLAND; SITE OF THE FAMOUS MOVIE 'THE ROCK'.

DURING THE TRIP, ALUMNI AND GUESTS WILL BE ENTERTAINED WITH HISTORICAL FACTS ABOUT THE SAN FRANCISCO WATERFRONT, HAVE AN OPPORTUNITY TO TAKE PICTURES FROM DIFFERENT POSITIONS ALONG THE BOAT DECK, OR CAN SIMPLY ENJOY UNOBSTRUCTED VIEWS OF SAN FRANCISCO'S SKYLINE FROM DIFFERENT VANTAGE POINTS.

IT CAN GET QUITE WINDY ON THE BAY CRUISE. ALUMNI AND GUESTS ARE ENCOURAGED TO PACK **AT LEAST ONE SET OF OUTERWEAR FOR THIS CRUISE** - CASUAL JACKETS, HOODIES, OR WIND BREAKERS. AT THE AQUARIUM OF THE BAY, EMBARK ON AN ADVENTURE OF DISCOVERY ABOUT SAN FRANCISCO'S FASCINATING MARINE LIFE. **CHILDREN WILL PARTICULARLY LOVE THIS TREAT**. WALK THROUGH 300 LINEAR FEET OF CRYSTAL CLEAR TUNNELS SURROUNDED BY AN INCREDIBLE ARRAY OF INDIGENOUS MARINE ANIMALS. TOUCH SHARKS, RAYS, SKATES, AND SEA STARS. ASK ATTENDANTS QUESTIONS ABOUT MARINE LIFE.

4. MONTEREY AND CARMEL/17 MILE DRIVE



MONTEREY AND CARMEL ARE LOCATED WITHIN THE MONTEREY PENINSULA SOUTH OF SAN FRANCISCO. THIS TOUR WILL BE ALONG A PORTION OF CALIFORNIA'S MOST SCENIC COASTLINE.

TOUR PARTICIPANTS WILL PASS THROUGH THE TOWNS OF SANTA CRUZ AND CAPITOLA ON THE WAY TO MONTEREY. VIEW THE MONTEREY BAY AND ITS RUGGED COASTLINE.

TRIP WILL INCLUDE A SCHEDULED STOP AT **STEINBECK'S CANNERY ROW** IN MONTEREY.



ENJOY THE RIDE THROUGH THAT FAMOUS STRETCH OF THE PACIFIC COAST HIGHWAY KNOWN THROUGHOUT THE WORLD SIMPLY AS **'THE 17 MILE DRIVE'**.

THIS TRIP WILL INCLUDE A WINDING DRIVE TO THE SEASIDE TOWN OF CARMEL (HOME OF FAMOUS MOVIE ACTOR AND MAYOR CLINT EASTWOOD).

THE 17 MILE DRIVE ALSO FEATURES SPECTACULAR VIEWS OF THE PACIFIC OCEAN, THE LONE CYPRESS, **THE LODGE AT PEBBLE BEACH**, SEAL ROCK, AND PACIFIC GROVE. TAKE A RETURN TRIP THROUGH SILICON VALLEY, HOME OF WORLD FAMOUS TECHNOLOGY GIANTS.

EXPECT WEEKLY BULLETINS FROM THE REUNION COMMITTEE. BULLETIN TOPICS INCLUDE GENERAL INFORMATION ABOUT SAN FRANCISCO, CALIFORNIA, SCHEDULED TOURS, THE ENDOWMENT FUND, NETWORKING, SHOPPING, AND OTHER LEISURE ACTIVITIES.

To Register now please go to

<http://greatifealumni.org/2008reunion/registernow.asp>